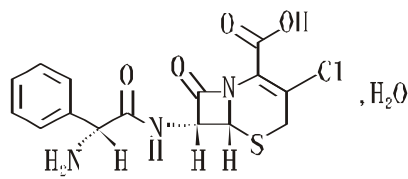


2006 10 26

Cefaclor Tablets
Toubaokeluo Pian

(6R, 7R, -7-[R, -2-, -2-]-3-, -8-, -5-, -1-
[4.2.0] -2-, -2-



$C_{15}H_{14}ClN_3O_4S \cdot H_2O$

385.82

0.25g $C_{15}H_{14}ClN_3O_4S$

0.25g(1) 3

4g(16)

(70 1) 2.5%

(100 1) (50 1)

2

AST ALT (40 1)
-

BUN (1/500)
(1/200)

1

-

() ()

2

2.3 2.8

3

(

4

) () (

5

()

6

Jaffe

7

8

) () (

3 5

45 60 50 70%
85% 25% 15% 8 60
0.6 0.9 2

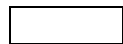
25 50% (65)
AUC

(20)

6 1 1
8 1 1

24

2015
H10960083



88

510515

(020)87063679

(020)87573176

(020)87061075

[http //www.byszc.com](http://www.byszc.com)